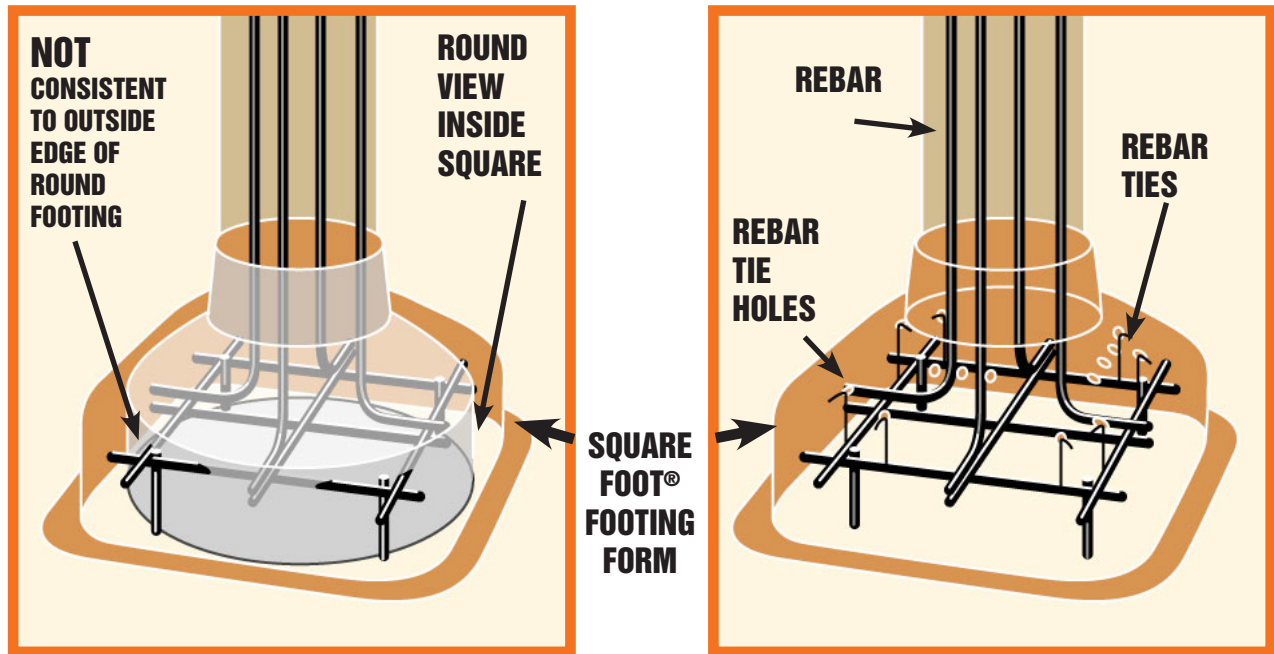




SQUARE FOOT

COMPARE REBAR SQUARE VS. ROUND FOOTING



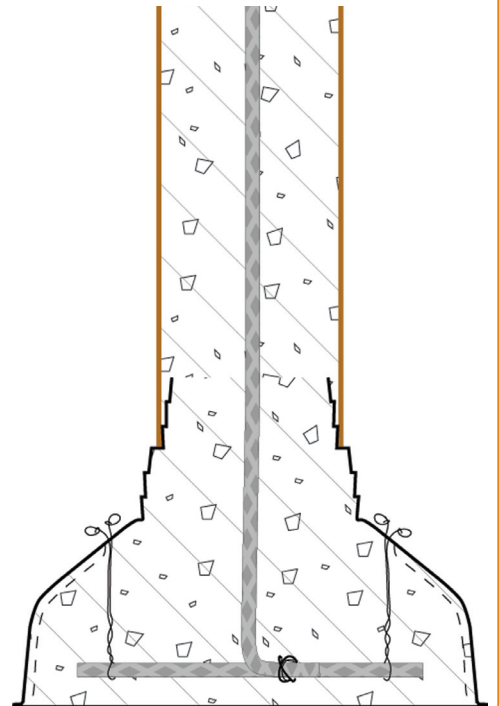
Use of rebar should be designed by a qualified structural engineer.

Reinforcement needs to be placed 1 1/2" to 2" from the outside edge or bottom of concrete footing to provide maximum strength or reinforcement.

In order to properly place rebar in a round/bell/cone footing it would have to be custom fabricated at a substantial increase in cost in materials and time.

Square Foot® allows rebar to be easily and properly placed in a position for maximum strength. This is extremely difficult to do with a round/bell/cone shaped form.

With SQUARE FOOT®, there are two sets of rebar tie holes on each corner to suspend rebar. This is not the case in a round/bell/cone footing.



Sound Footings LLC, 37 Talcott Road, PO Box 818, Williston, Vermont 05446
Toll: 877-924-2323, Tel: 802-764-2323, Fax: 802-764-5605
www.sqfoot.com